

今を異つめ、航空仕の新たな役割を追求する

TAIYO

Needs & Quality



Lightness and compact type

Lightening by aluminum body adoption
 (About 30% decrease compared with our company)
 Making to compact by rear exhaust adoption
 (About 30% decrease compared with our company)

SPECIFICATION

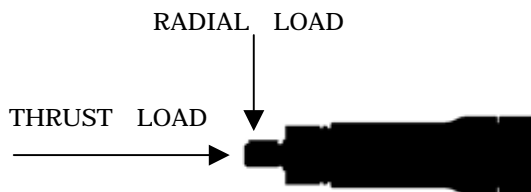
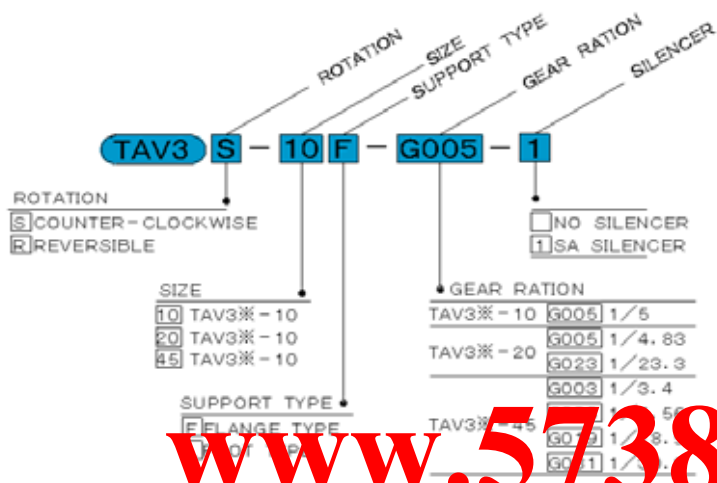
	GEAR RATIO	ROTATION	MAX. OUTPUT (0.5MPa)				STALL TORQUE N · m	STARTING TORQUE N · m	ALLOWABLE LOAD		MASS		
			POWER W	TORQUE N · m	ROTATION r/min	AIR CONSUMPTION L/min <ANR>			RADIAL N	THRUST N	F TYPE FLANGE kg	L TYPE FOOT kg	
TAV3 -10													
			COUNTER-CLOCKWISE	66.2	0.053	12000	190	0.115	0.069	41.0	40.9	0.30	0.36
	G005	1/5		66.2	0.265	2400	190	0.475	0.284	70.0	73.5	0.30	0.36
			REVERSIBLE	73.5	0.050	14000	210	0.108	0.065	39.0	32.7	0.30	0.36
TAV3 -20													
			COUNTER-CLOCKWISE	147	0.127	11000	340	0.222	0.134	137	104	0.48	0.62
	G005	1/4.83		147	0.624	2250	340	1.07	0.642	233	162	0.48	0.62
	G023	1/23.3		147	2.96	475	340	5.16	3.10	392	198	0.60	0.75
			REVERSIBLE	132	0.115	11000	350	0.177	0.108	137	99	0.48	0.62
				132	0.562	2250	350	0.852	0.512	233	162	0.48	0.62
TAV3 -45													
			COUNTER-CLOCKWISE	331	0.316	10000	710	0.610	0.366	157	147	0.74	0.89
	G003	1/3.4		331	1.08	2940	710	2.08	1.24	242	236	0.74	0.89
	G005	1/5.56		331	1.76	1800	710	3.38	2.03	284	276	0.74	0.89
	G019	1/18.9		331	5.96	530	710	11.5	6.88	435	423	0.97	1.12
	G031	1/30.9		331	9.73	325	710	18.8	11.3	512	501	0.97	1.12
			REVERSIBLE	279	0.314	8500	560	0.536	0.322	167	157	0.74	0.89
				279	1.07	2500	560	1.82	1.09	255	236	0.74	0.89
				279	1.75	1530	560	2.98	1.78	294	285	0.74	0.89
				279	5.93	450	560	10.1	6.08	459	432	0.97	1.12
			279	9.71	275	560	16.6	9.90	541	511	0.97	1.12	

NOTE) The performance value of the air motor is a value when pressure on the exhaust side is made the atmospheric pressure.

STALL TORQUE : When the rotational speed decreases in the straight line when the load increases from the state that the air motor is rotating, and it balances the load torque, the air motor stops.

STANDARD SPECIFICATION

ALLOWABLE LOAD



www.57382299.com

GENERAL SPECIFICATION

Use fluid : Air

Rated pressure : 0.5MPa

Range of use pressure : 0.3~0.7MPa

Ambient temperature : -10~+70 (Use it while not frozen.)

Lubricant: Internal enclosed grease · · · Coronex EP-No.1 (IDEMITU) grease

Air line lubrication · · · JIS K2213-2 type (additive turbine oil)

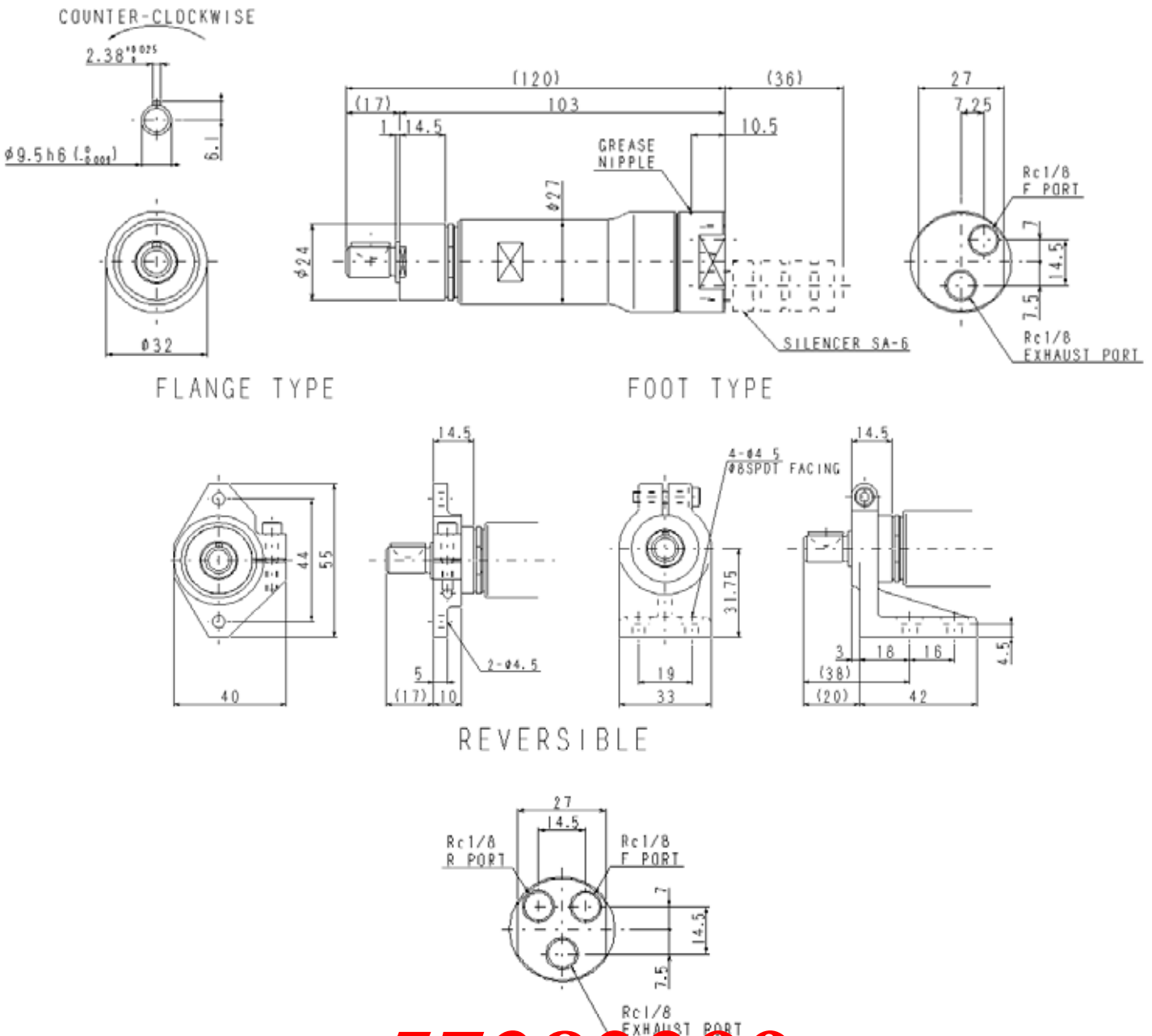
ISO VG 32 or equivalent.

Continuous running: Please use it by the rotational speed of the maximum output rotational speed 70% or less at continuous use without rest time

Range of recommended rotational speed : $(0.3 \sim 1.0) \times$ output max H.P.

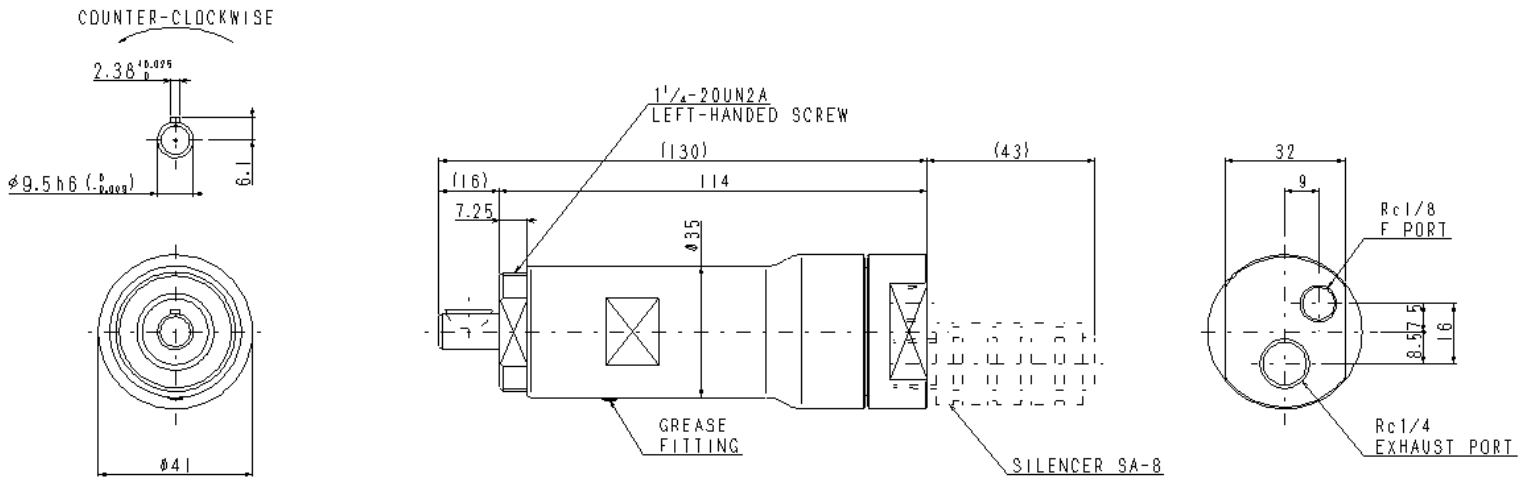
OUTLINE DRAWING

TAV3 - 10

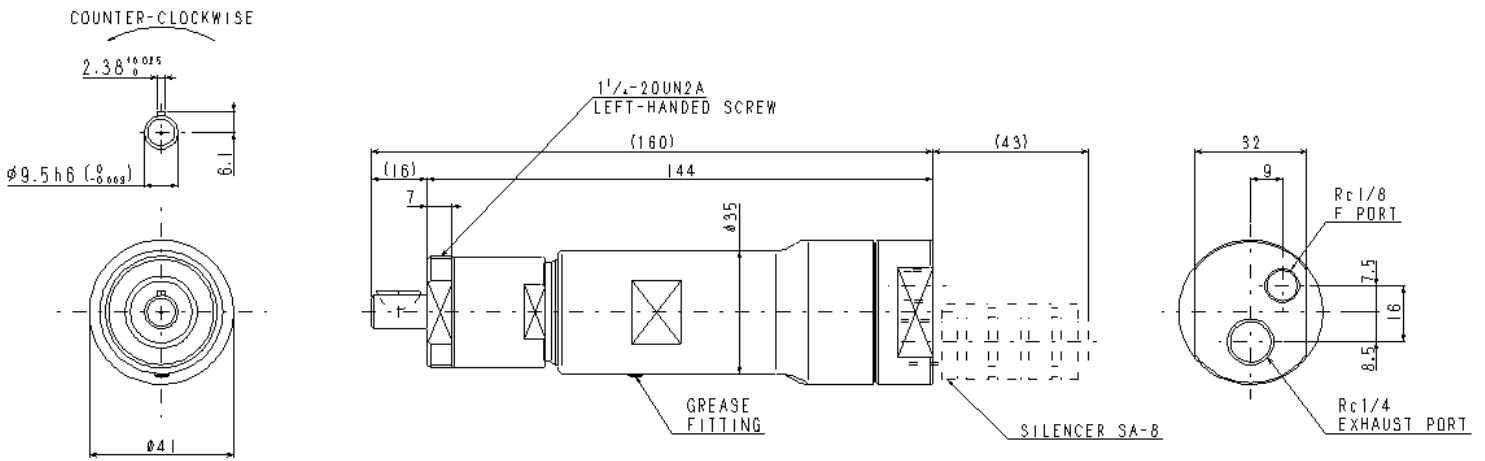


T A V 3 - 20

T A V 3 - 20G005

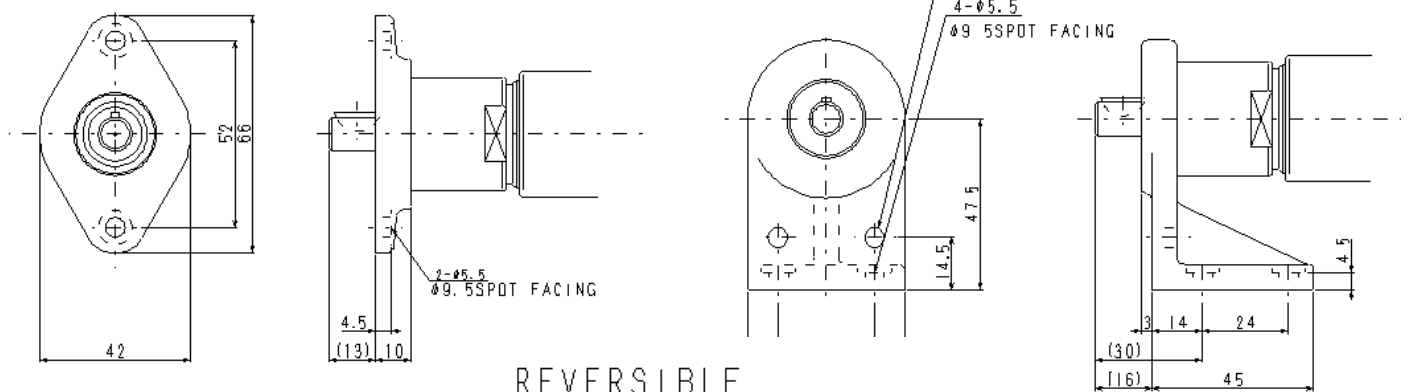


T A V 3 - 20G023

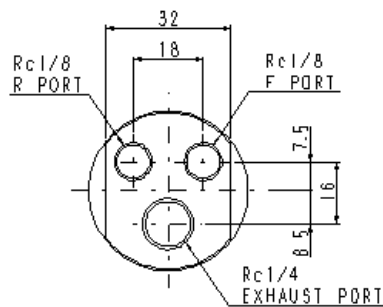


FLANGE TYPE

FOOT TYPE



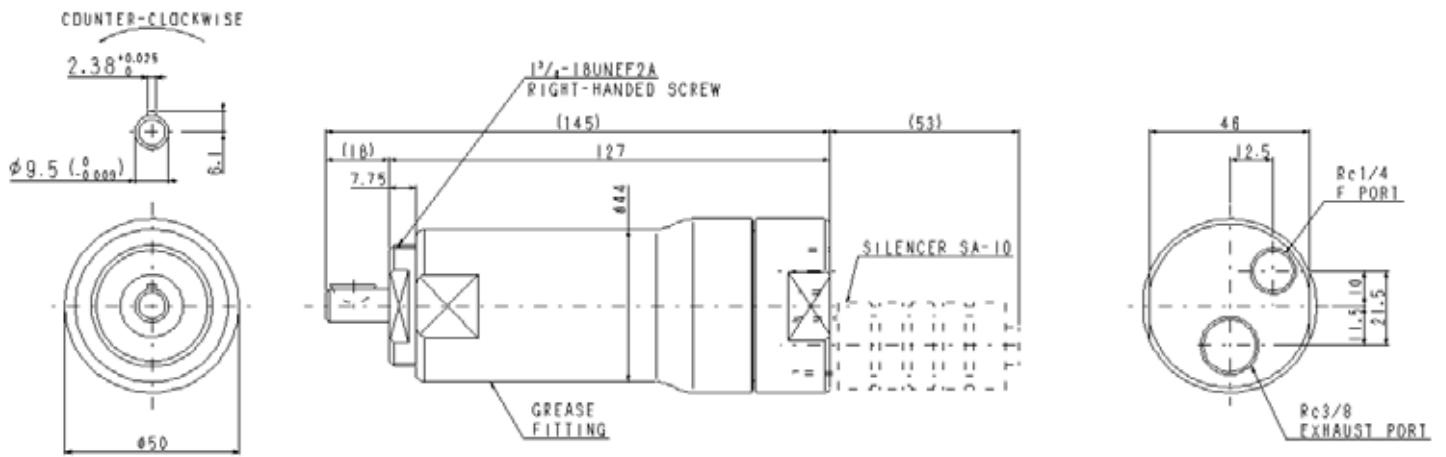
REVERSIBLE



TAV3 - 45

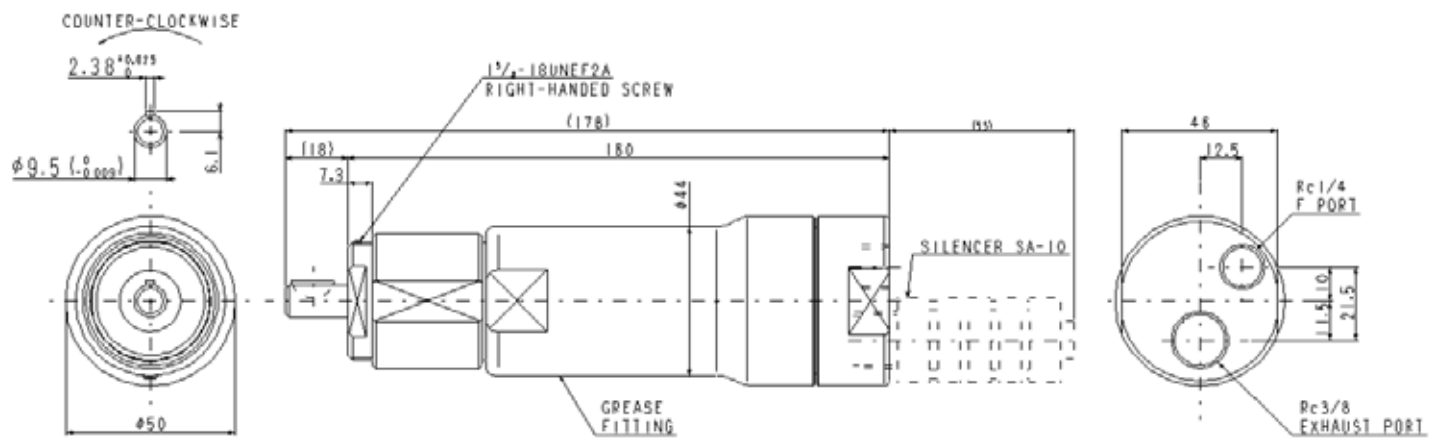
TAV3 - 45G003

TAV3 - 45G005



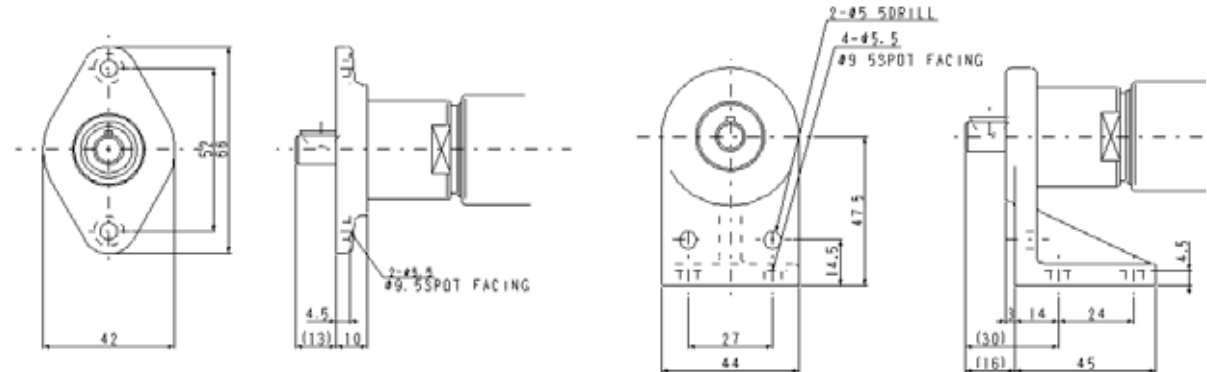
TAV3 - 45G019

TAV3 - 45G031

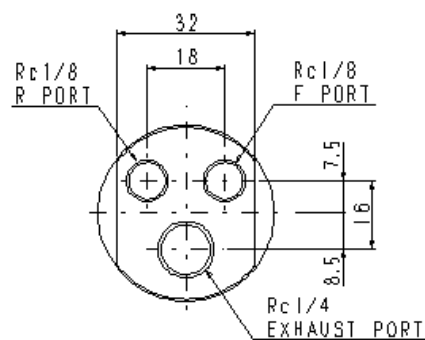


FLANGE TYPE

FOOT TYPE



REVERSIBLE



Notes concerning installation

The bend load to the shaft point of the air motor causes defective work and avoid it, please.
Please use it within the range of the allowable load when a radial load and the thrust load hang.

TAV3 - 10

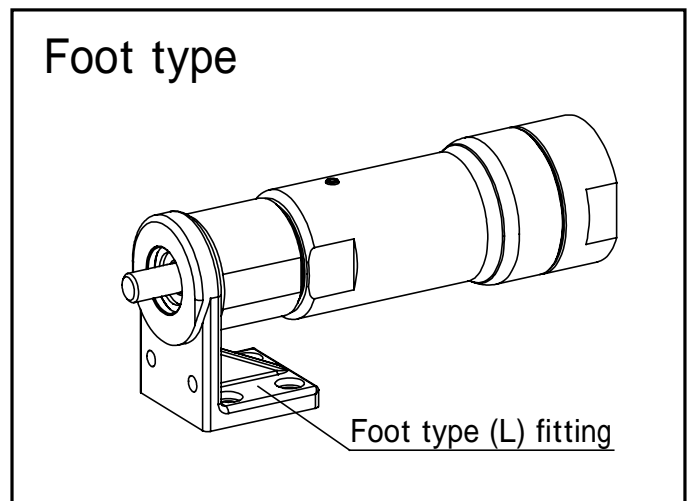
Install supporting fitting according to the below diagram for use.
Fasten with a hexagonal wrench at a torque greater than $1 \sim 1.6 \text{ N} \cdot \text{m}$ ($10 \sim 16 \text{ kgf} \cdot \text{cm}$).

TAV3 - 20

The bolts used for installation are left-handed. Be cautious during installation and removal
Fasten the supportive fitting with a torque rating of $20 \sim 24 \text{ N} \cdot \text{m}$ ($200 \sim 240 \text{ kgf} \cdot \text{cm}$).

TAV3 - 45

The fitting installation bolts are right handed. Fasten with a torque of $30 \sim 38 \text{ N} \cdot \text{m}$ ($300 \sim 380 \text{ kgf} \cdot \text{cm}$).



CAUTION

Ensure that the spindles of the machinery to be driven and the air motor are properly aligned with sufficient strength.

Notes concerning refueling

Place an air lubrication unit at the pneumatic supply side to provide mist lubrication.

The lubrication oil to be used should conform to JIS K2213-2 type (additive turbine oil) ISO VG 32 or equivalent.

The appropriate rate of lubrication is approximately 2 drops of oil per minute



CAUTION

When refuel is insufficient, it causes the trouble such as burning of the longevity decreases, the damage of Behn or the motor housing. Please set up air lubriator as much as possible near the air motor.

Please read the manual about details.

PERFORMANCE CURVE

